

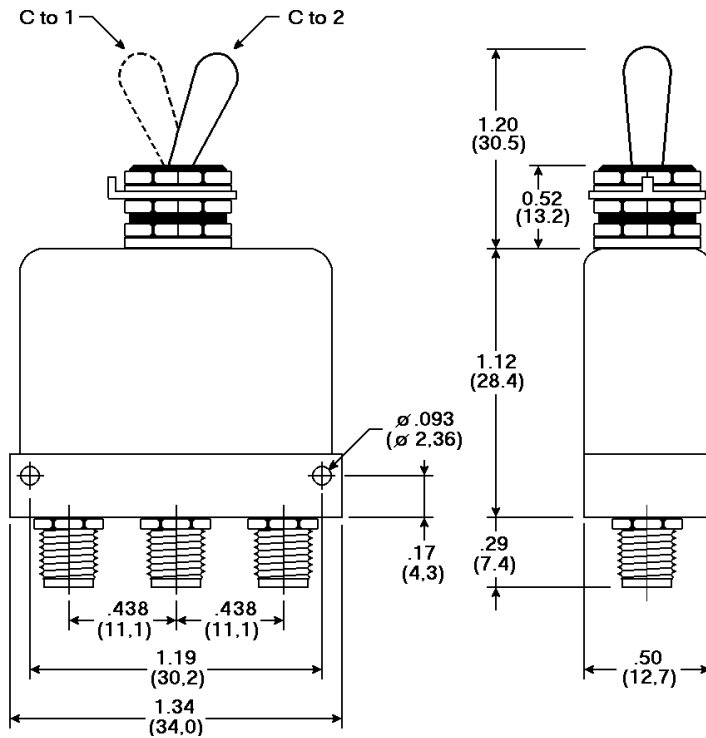
Il presente documento è, a rigore di legge, proprietà della AMRA s.p.a., non potrà quindi essere in alcun modo riprodotto senza esplicita autorizzazione. / The information contained in this document or item is the property of AMRA s.p.a. and shall not be reproduced in whole or in part without written permission.

**DIMENSIONI**

Pollici (mm)

**DIMENSIONAL DRAWING**

inches (mm)



**REQUISITI RF  
RF REQUIREMENTS**

	Range di frequenza / Frequency range (GHZ)			
	0 - 4.0	4.0 - 8.0	8.0 - 12.4	12.4 - 18.0
VSWR MAX	1.10	1.15	1.20	1.40
Isolamento / Isolation min (dB)	80	80	70	65
Perdita d'inserzione / Insertion loss MAX (dB)	0.2	0.3	0.4	0.5
Potenza CW / CW Power MAX (W)	60	50	35	25

**DATI ELETTRICI**

Resistenza di contatto ..... 50 mΩ .....  
 Tipo connettore ..... SMA femmina/female .....  
 Impedenza ..... 50 Ω .....

**ELECTRICAL DATA**

Contact Resitance  
 Connectors type  
 Impedance

**RELE' COASSIALE MANUALE  
MANUAL COAXIAL SWITCH  
SPDT SMA**

Data rev.	Comp.	Contr.	Appr.
18/03/02	<i>M. Baggi</i>	<i>P. Corti</i>	<i>M. Guzzi</i>

**P/N : ZR30-6119-00**



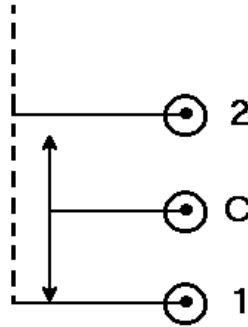
**AMRA spa**

**SCHEDA TECNICA / DATA SHEET**

Pag. 1 / 2

**SCHEMA**

**WIRING DIAGRAM**



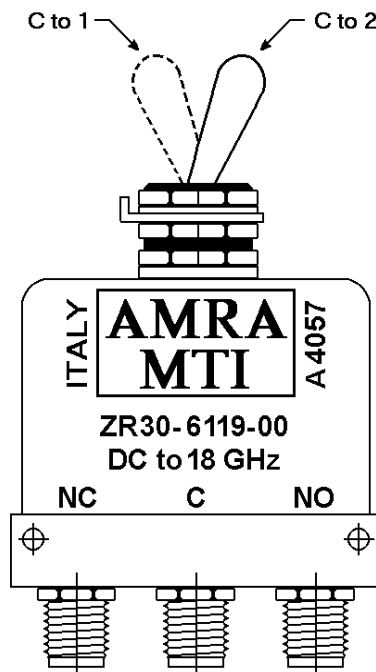
**CARATTERISTICHE**

**CHARACTERISTICS**

Vita meccanica ..... 50.000 cicli / cycles ..... Mechanical life  
 Peso ..... 38 g (1.34 oz) ..... Weight  
 Campo di temperatura ..... -20°C +55°C (-4°F +131°F) ..... Operating temperature range  
 Grado di protezione ..... IP 60 (Ref. CEI EN 60529) ..... Protection degree

**MARCHIATURA**  
 Logo e connessioni

**MARKING**  
 Logo and Connections



**RELE' COASSIALE MANUALE**  
**MANUAL COAXIAL SWITCH**  
**SPDT SMA**

Data rev.	Comp.	Contr.	Appr.
18/03/02	<i>M. Baggi</i>	<i>P. Corti</i>	<i>M. Guzzi</i>

**P/N : ZR30-6119-00**



**AMRA spa**

**SCHEDA TECNICA / DATA SHEET**

Pag. 2 / 2